

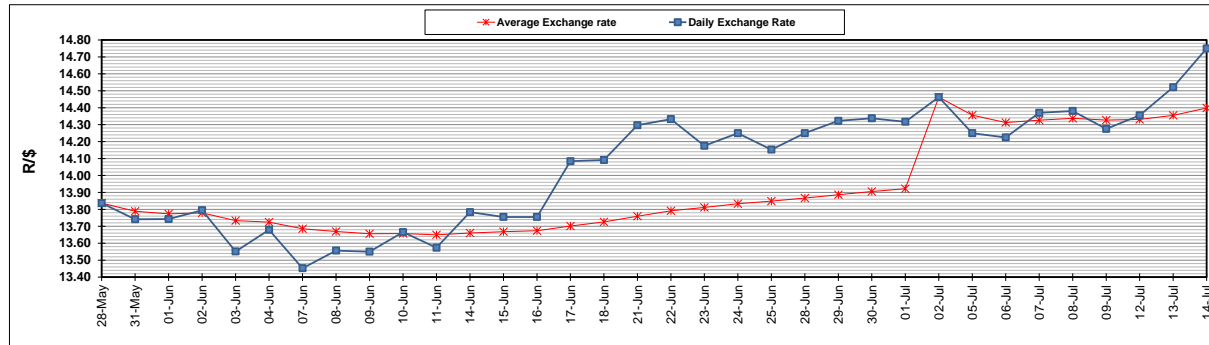
	PETROL 95 ULP	PETROL 93 ULP & LRP	DIESEL 0.05%	DIESEL 0.005%	ILL. PAR.
GAUTENG PUMP PRICE (SA c/l) AS FROM 07/07/2021	1,739.000	1,720.000	-	-	-
WHOLESALE PRICE (SA c/l) AS FROM 07/07/2021	-	-	1,508.620	1,512.020	913.488
SINGLE NATIONAL MAXIMUM RETAIL PRICE	-	-	-	-	1,150.000
BASIC FUEL PRICE - 14/07/2021 (SA c/l)	850.427	837.656	792.294	794.582	772.344
PRESS RELEASE CONTRIBUTION TO BFP 07/07/2021 - 14/07/2021 (SA c/l)	743.170	734.170	721.630	725.030	700.128
UNIT OVER/(UNDER) RECOVERY - 14/07/2021 (SA c/l)	(107.257)	(103.486)	(70.664)	(69.552)	(72.216)
AVERAGE BASIC FUEL PRICE 02/07/2021 - 14/07/2021	821.189	807.697	765.133	767.968	743.645
AVERAGE UNIT OVER/(UNDER) RECOVERY 02/07/2021 - 14/07/2021	(86.686)	(83.194)	(57.503)	(56.604)	(55.517)

### ANALYSIS MOVEMENT OF AVERAGE OVER/(UNDER) RECOVERY

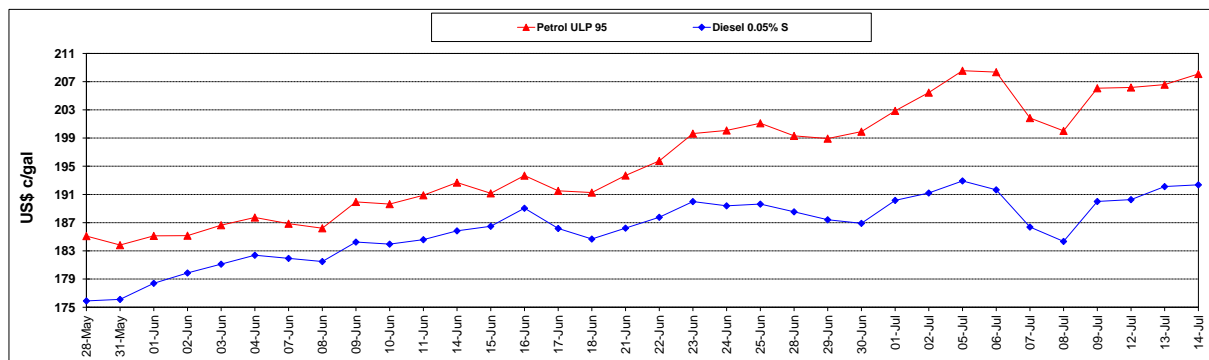
	PETROL 95	PETROL 93	DIESEL 0.05%	DIESEL 0.005%	ILL. PAR.
- MOVEMENT IN INTERNATIONAL PRODUCT PRICES	(59.493)	(56.448)	(32.166)	(31.174)	(30.892)
- MOVEMENT IN EXCHANGE RATE	(27.193)	(26.746)	(25.337)	(25.431)	(24.625)
AVERAGE UNIT OVER/(UNDER) RECOVERY 02/07/2021 - 14/07/2021	(86.686)	(83.194)	(57.503)	(56.604)	(55.517)

### R/\$ EXCHANGE RATE - (R/\$14.7498- 14/07/2021)

#### EXCHANGE RATE USED IN BASIC FUEL PRICE



#### INTERNATIONAL PRODUCT PRICES OF BASKET USED IN BASIC FUEL PRICE



#### BASIC FUEL PRICE IN SA CENTS PER LITRE

